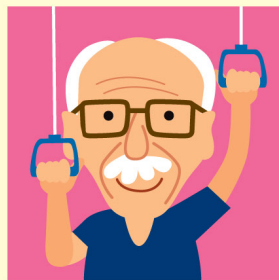




「長者社區照顧服務券」 試驗計劃（第三階段）

Pilot Scheme on Community Care Service
Voucher for the Elderly (Third Phase)



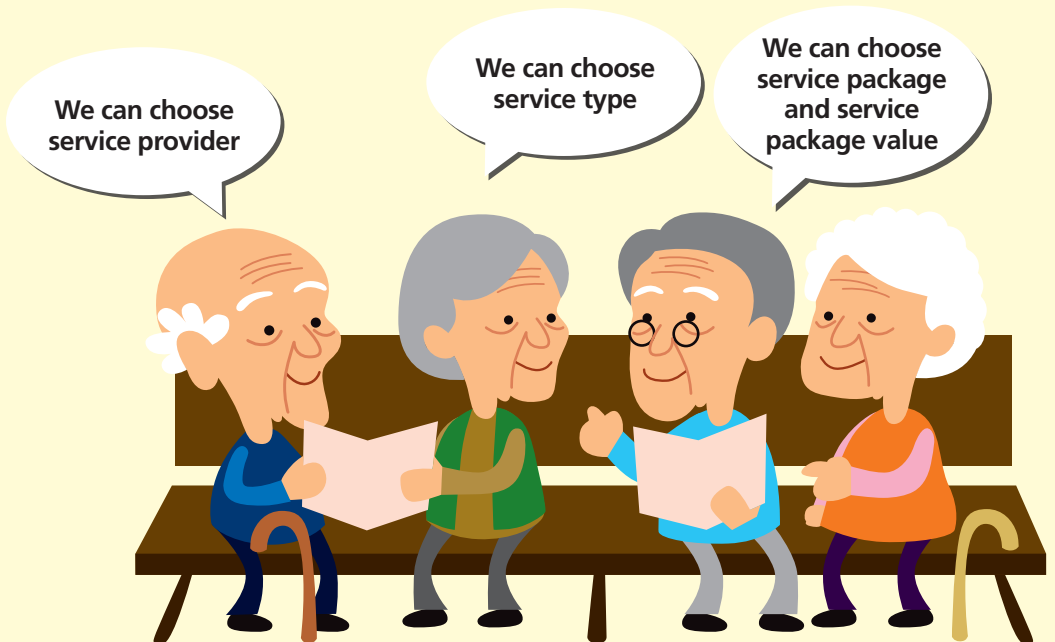
社會福利署
Social Welfare Department

Introduction

The Social Welfare Department (SWD) launches the third phase of the Pilot Scheme on Community Care Service Voucher for the Elderly (Pilot Scheme) on 1 October 2020. Adopting the funding mode of “money-following-the-user” approach, eligible elderly persons may choose the community care services that suit their individual needs with the use of community care service vouchers. Under the Pilot Scheme, a maximum of 8 000 vouchers will be issued for the eligible elderly persons.

Characteristics of the Pilot Scheme

- Recognised Service Providers (RSPs) include non-governmental organisations receiving subventions from SWD, non-profit-making organisations / social enterprises and private organisations
- The elderly persons may choose any voucher value in between the ceiling and floor voucher values (both values inclusive) to purchase service packages to suit their needs (The monthly ceiling and floor voucher values for 2021-22 are \$9,980 and \$4,170 respectively))
- Free to choose centre-based and / or home-based services



Eligibility Criteria of Elderly Participant

Those are on the Central Waiting List for Subsidised Long Term Care Services and having been assessed and recommended for Community Care Services or Residential Care Services under the Standardised Care Need Assessment Mechanism for Elderly Services, without receiving any residential care service or subsidised community care service.

Scope of Service

The services are similar to those of the existing subsidised Day Care Centre for the Elderly and Enhanced Home and Community Care Services. The services include rehabilitation exercise, nursing care and personal care, etc. Some RSPs also provide residential respite service and / or speech therapy service.



Rehabilitation exercise
(e.g. physiotherapy, occupational therapy, etc)



Nursing care
(e.g. blood pressure monitoring, wound management, etc)



Personal care
(e.g. feeding, bathing, etc)



Residential respite service



Speech therapy service

Service Delivery Mode

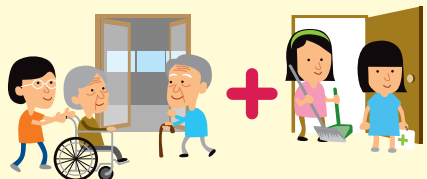
There are three delivery modes for elderly persons to choose:



Centre-based



Home-based



Centre-based and Home-based

Co-payment

- Under the “affordable users pay” principle, the less that the elderly person can afford, the more the Government will subsidise.
- According to the household income of the elderly persons, there are six categories of co-payment set at **5%, 8%, 12%, 16%, 25%, 40%** of the service package values.

How to Apply

SWD will send letters to the eligible elderly persons on the Central Waiting List for Subsidised Long Term Care Services, inviting them to join the Pilot Scheme.

Enquiry

- SWD Community Care Service Voucher Office (**Tel: 3 107 3013**)
(from Monday to Friday, 9:30 am to 1:00 pm and 2:30 pm to 5:00 pm, except public holidays)
- Responsible worker of the elderly persons
- Please visit



SWD website at
www.swd.gov.hk and



SWD Elderly Information
website at
www.elderlyinfo.swd.gov.hk

for the details of the Pilot Scheme and the list of RSPs

Tips for smart choice

- (1) Get the service information through websites of SWD and RSPs;
- (2) Seek advice from social worker / SWD Community Care Service Voucher Office if required;
- (3) Visit RSPs to get detailed information about the services to be provided and clarify details;
- (4) Discuss with RSPs the items and packages of services to be provided to suit individual needs;
- (5) If RSP proposes top-up services or items to you, please consider whether you have genuine need before purchase. You may also discuss with your family members, or consult social worker / SWD Community Care Service Voucher Office.