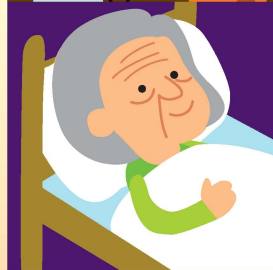
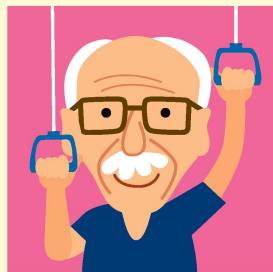




「長者社區照顧服務券 試驗計劃」(第二階段)

Pilot Scheme on Community Care Service
Voucher for the Elderly (Second Phase)



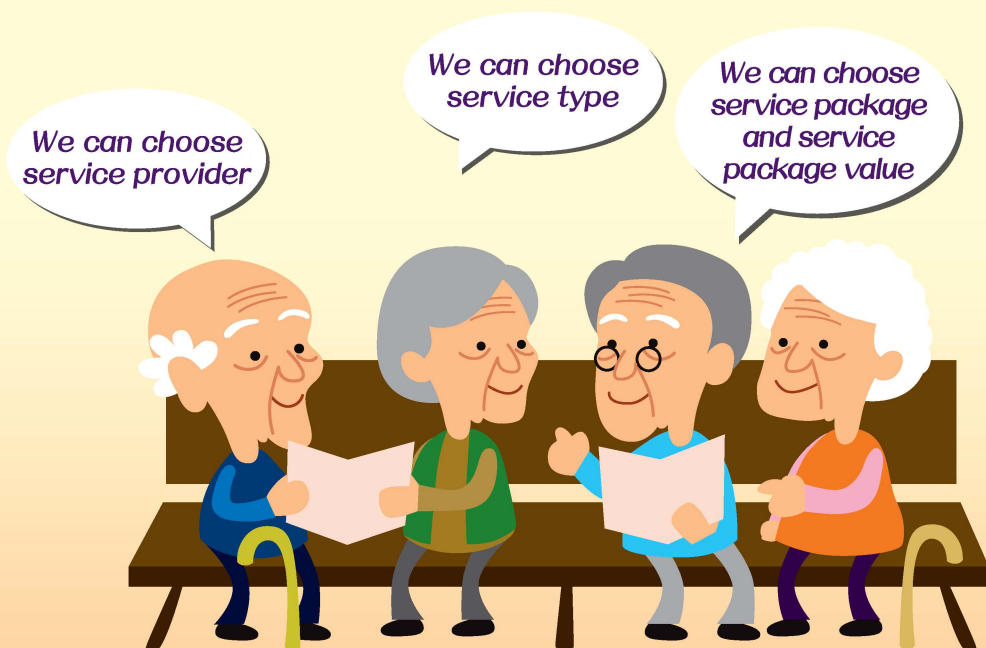
● Introduction



The Social Welfare Department (SWD) has launched the second phase of the Pilot Scheme on Community Care Service Voucher for the Elderly (Pilot Scheme) on 3 October 2016. Adopting the funding mode of "money-following-the-user" approach, eligible elderly persons may choose the community care services that suit their individual needs with the use of community care service vouchers. Under the Pilot Scheme, a maximum of 6 000 vouchers will be issued for the eligible elderly persons.

● Characteristics of the Pilot Scheme

- Recognised Service Providers (RSPs) include non-governmental organisations receiving subventions from SWD, non-profit-making organisations /social enterprises and private organisations
- Five different service package values [**\$9,600**, **\$8,150**, **\$7,260**, **\$5,810** and **\$4,020** (2019-20 price level)]
- Free to choose centre-based and / or home-based services

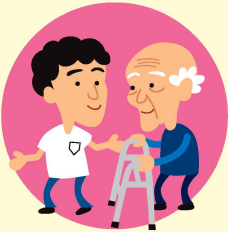


● Eligibility Criteria of Elderly Participant

Those are on the Central Waiting List for Subsidised Long Term Care Services and having been assessed by the Standardised Care Need Assessment Mechanism for Elderly Service of the SWD as moderately or severely impaired, without receiving any residential care service or subsidised community care service.

● Scope of Service

The services are similar to those of the existing subsidised Day Care Centre for the Elderly and Enhanced Home and Community Care Services. The services include rehabilitation exercise, nursing care and personal care, etc. Some RSPs also provide residential respite service.



Rehabilitation exercise

(e.g. physiotherapy, occupational therapy, etc)



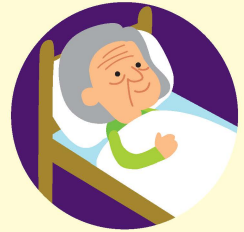
Nursing care

(e.g. blood pressure monitoring, wound management, etc)



Personal care

(e.g. feeding, bathing, etc)



Residential respite service

● Service Delivery Mode

There are three delivery modes for elderly persons to choose:

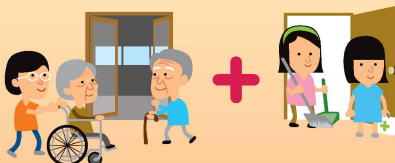
- Centre-based



- Home-based



- Centre-based and Home-based



● Co-payment

- Under the "affordable users pay" principle, the less that the elderly person can afford, the more the Government will subsidise.
- According to the household income of the elderly persons, there are six categories of

co-payment set at

5%

8%

12%

16%

25%

40%

of the service package values.

● How to Apply



SWD will send letters to the eligible elderly persons on the Central Waiting List for Subsidised Long Term Care Services, inviting them to join the Pilot Scheme.

● Enquiry

- SWD Centralised Team of the Pilot Scheme on Community Care Service Voucher for the Elderly (**☎ 3107 3013**)
(from Monday to Friday, 9:30 am to 1:00 pm and 2:30 pm to 5:00 pm, except public holidays)
- Responsible worker of the elderly persons
- Please visit



SWD website at
www.swd.gov.hk

and



SWD Elderly Information website at
www.elderlyinfo.swd.gov.hk

for the details of the Pilot Scheme and the list of RSPs



Tips for smart choice

- (1) Get the service information through websites of SWD and RSPs;
- (2) Seek advice from social worker or SWD Centralised Team if required;
- (3) Visit RSPs to get detailed information about the services to be provided and clarify details;
- (4) Discuss with RSPs the items and packages of services to be provided to suit individual needs;
- (5) If RSP proposes top-up services or items to you, please consider whether you have genuine need before purchase. You may also discuss with your family members, or consult social worker / SWD Centralised Team.